



Revision History				
Rev.	ECN#	Reason and Description of Change	ECN Originator	Release date
00	11-0345	Initial Release (Preliminary)	KL Tai	

UNCONTROLLED COPY



Product Datasheet

DJSB-X150-XXXX

Introduction

DSEM High Power LED offers industry leading flux output per package and can handle high thermal and high driving current.

The package utilizes patented substrate technology which enables superior thermal conductivity.

These high lumen output integrated sources reduce system design complexity, enabling miniaturized cost-effective lamp and luminaries designs.

Features

- Available in Warm White and Cool White color.
- Energy efficient
- AMS (Advanced Metal Substrate) for excellent heat transfer.
- High current operation.
- Long operation life.
- Wide viewing angle.
- Silicone encapsulation.
- Low thermal resistance.
- Mounting method: screw holes.
- Solder pads for wire attachment.
- RoHS compliant.
- Uniform illumination.

DSEM HOLDINGS SDN. BHD.

Address: Plot 26, Phase 4, Free Industrial Zone, Hilir Sungai Keluang 3, 11900 Bayan Lepas, Penang, Malaysia.

Website: www.dsem.com

Tel: +60 4 646 7311

Fax: +60 4 643 2311



Part numbering

DJSB-X X XX-X X XX

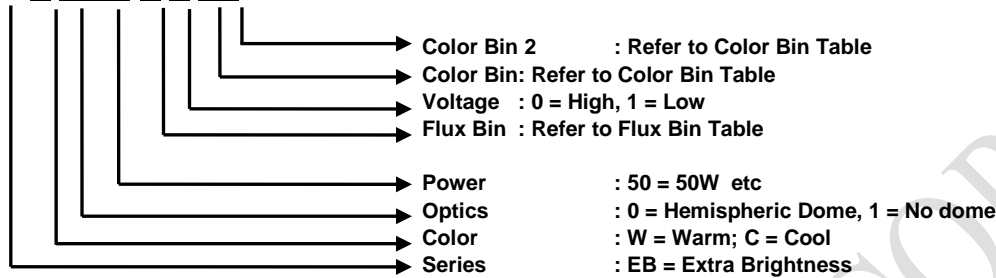


Table 1: Flux Characteristics

Flux Characteristics Color	Base Part Number	Typical Luminous Flux Φ_v (lm), $T_{case}=60^\circ C$ [1]	Minimum Luminous Flux Φ_v (lm), $T_j=25^\circ C$ [2]	Typical Luminous Flux Φ_v (lm), $T_j=25^\circ C$	Test Current (mA) [3]
Warm White	DJSB-W150	3000	3000	3400	2100
Neutral White	DJSB-N150	3600	3600	4000	2100
Cool White	DJSB-C150	4700	4700	5100	2100

Notes :

1. Flux measurement tolerance is $\pm 7\%$
2. Φ_v is the total luminous flux output as device is tested at DSEM flux tester setup. For tester detail, please contact DSEM sales representatives.
3. Parts are tested in pulsed conditions, $T_j = 25^\circ C$. Pulse width is 20ms at rated test current.

Table 2: Optical Characteristics

White	ANSI CCT (Kelvin) [1] [2][3]			Color Rendering Index [4]	Viewing Angle $2\theta_{1/2}$ [5] (Degrees)
	Min	Nominal	Max		
Warm	2580	3000	3750	82	120
Neutral	3710	4000	4750	78	120
Cool	4750	5600	7000	65	120

Notes :

1. Parts are tested in pulsed conditions, $T_j = 25^\circ C$. Pulse width is 20 ms at rated test current.
2. Refer to Flux Characteristic Table for test current data.
3. Product is binned for color in x y coordinates.
4. Higher CRI options available upon request.
5. Viewing angle is the off axis angle from the centerline where I_v is $1/2$ of the peak value.

DSEM HOLDINGS SDN. BHD.

Address: Plot 26, Phase 4, Free Industrial Zone, Hilir Sungai Keluang 3, 11900 Bayan Lepas, Penang, Malaysia.

Website: www.dsem.com

Tel: +60 4 646 7311

Fax: +60 4 643 2311



Table 3: Electrical Characteristics

Color	Base Part Number	Forward Voltage Vf (V) [1]			Test Current (mA) [2]	Typical Thermal Resistance Junction to Case (°C/W) R _{θj-c}
		Min	Typ	Max		
Warm White	DJSB-W150	24.0	25.2	28	2100	TBD
Neutral White	DJSB-N150					
Cool White	DJSB-C150					

Notes:

- Parts are tested in pulsed conditions, T_j = 25°C. Pulse width is 20 ms at rated test current.
- DSEM maintains a tester tolerance of ± 0.10 V on forward voltage measurements.

Table 4: Absolute Minimum and Maximum Ratings

Part Number	Maximum DC Forward Current (mA)	Minimum DC Forward Current (mA) [1]	Maximum Peak Pulsed Current (mA) [2]	Maximum Reverse Voltage (V _r) [3]
DJSB-X150	TBD	TBD	TBD	TBD

Notes:

- Driving these high current devices at low currents can result in variations in performance. For low current operation pulse width modulation is recommended.
- DSEM recommends a maximum duty cycle of 10% when operating LED Arrays at the maximum peak pulsed current specified
- Light emitting diodes are not designed to be driven in reverse voltage.

Table 5: Maximum Ratings

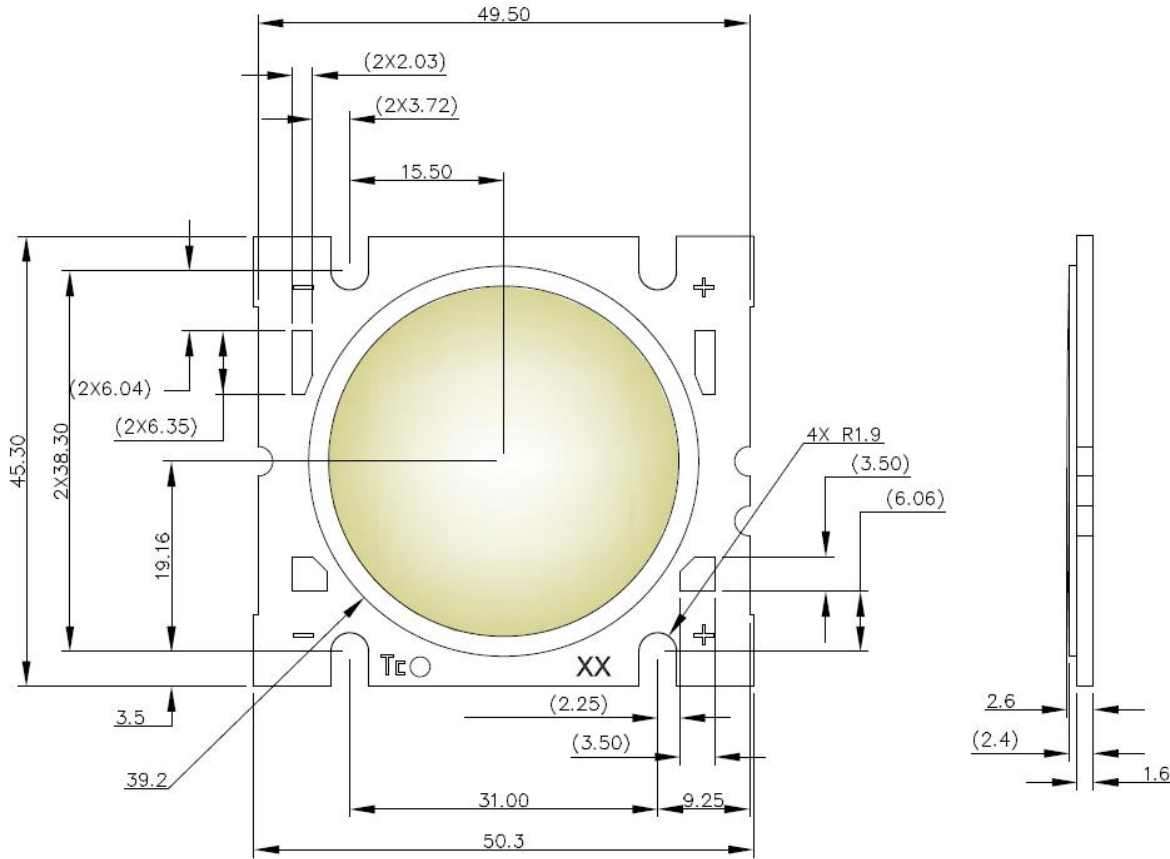
Parameter	Maximum Rating
LED Junction Temperature	150°C
Storage Temperature	-40°C to +105°C
Operating Case Temperature	105°C
Soldering Temperature	3.5 seconds, 350°C or lower

DSEM HOLDINGS SDN. BHD.

Address: Plot 26, Phase 4, Free Industrial Zone, Hilir Sungai Keluang 3, 11900 Bayan Lepas, Penang, Malaysia.
 Website: www.dsem.com Tel: +60 4 646 7311 Fax: +60 4 643 2311



Figure 1: Mechanical Dimensions



Notes :

1. Slots are for M2.5, M3 or #4 screws.
2. Solder pads are labeled "+" and "-" to denote positive and negative, respectively.
3. It is not necessary to provide electrical connections to both sets of solder pads. Either set of solder pads (6.35 x 2.03 mm rectangular pads or 3.50 mm tapered square pads) may be used depending on application specific design requirements.
4. Drawings are not to scale.
5. Drawing dimensions are in millimeters.
6. DSEM recommends four tapped holes for mounting screws
7. Unless otherwise specified, tolerances are $\pm 0.10\text{mm}$.
8. Dimensions with parenthesis '()' are for reference only.

The optical center of the LED is defined by the mechanical center of the LED.

DSEM HOLDINGS SDN. BHD.

Address: Plot 26, Phase 4, Free Industrial Zone, Hilir Sungai Keluang 3, 11900 Bayan Lepas, Penang, Malaysia.

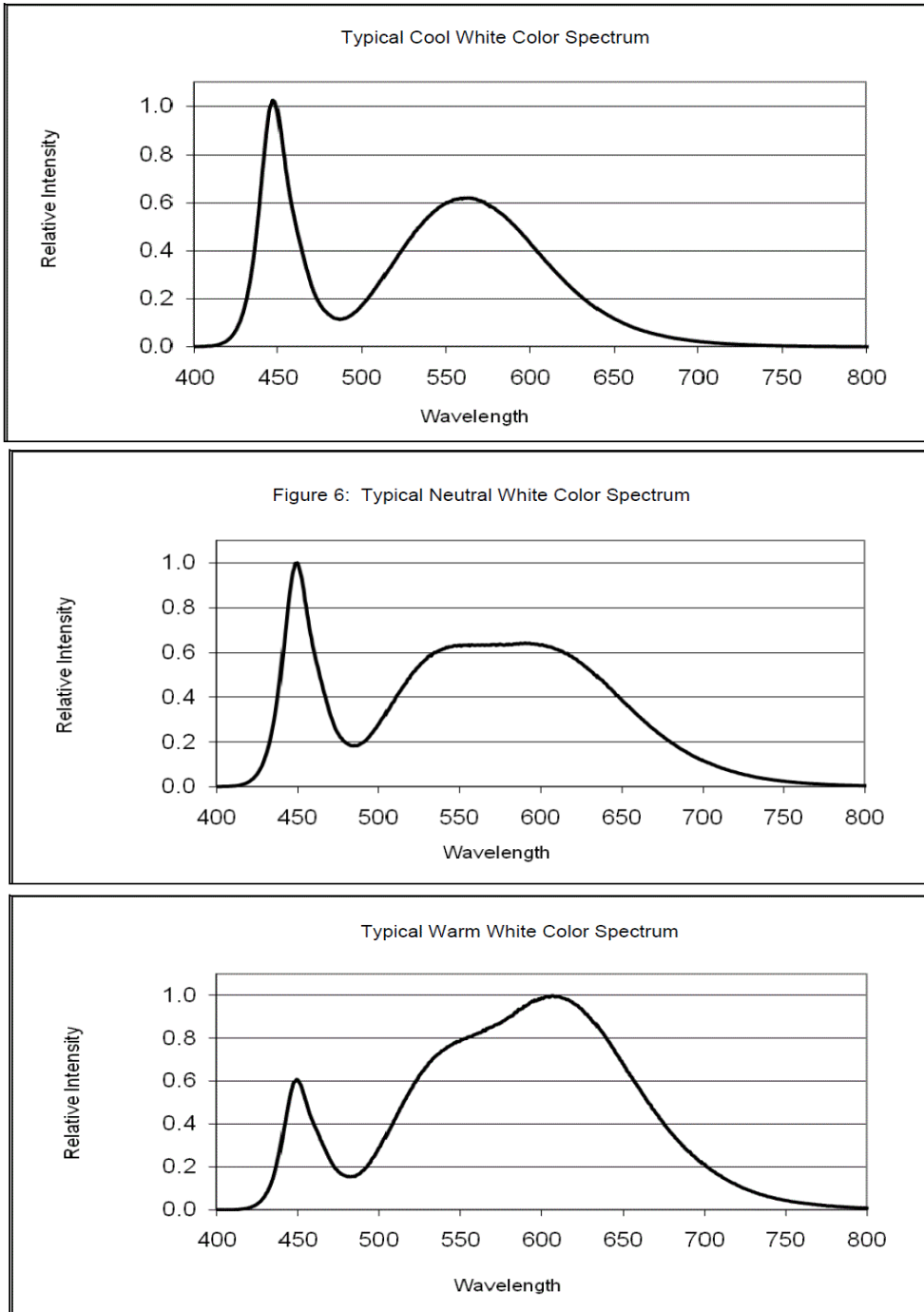
Website: www.dsem.com

Tel: +60 4 646 7311

Fax: +60 4 643 2311



Figure 2: Wavelength Characteristics at Rated Test Current, Tj=25°C



DSEM HOLDINGS SDN. BHD.

Address: Plot 26, Phase 4, Free Industrial Zone, Hilir Sungai Keluang 3, 11900 Bayan Lepas, Penang, Malaysia.

Website: www.dsem.com

Tel: +60 4 646 7311

Fax: +60 4 643 2311



Figure 3: Typical Relative Luminous Flux vs. Current, $T_j=25^\circ\text{C}$

(TBD)

Figure 4: Typical Light Output Characteristics vs. Temperature

(TBD)

Figure 5: Typical Forward Current Characteristics at $T_j = 25^\circ\text{C}$

(TBD)

Figure 6: Current Derating Curves

(TBD)

UNCONTROLLED COPY

DSEM HOLDINGS SDN. BHD.

Address: Plot 26, Phase 4, Free Industrial Zone, Hilir Sungai Keluang 3, 11900 Bayan Lepas, Penang, Malaysia.

Website: www.dsem.com

Tel: +60 4 646 7311

Fax: +60 4 643 2311



Luminous Flux Binning

The table below lists the standard photometric luminous flux bins. All production testing and binning is conducted under pulsed test conditions at $T_j = 25^\circ\text{C}$.

Code	Min Flux (lm)	Max Flux (lm)
C	2250	2500
D	2500	2800
E	2800	3100
F	3100	3450
G	3450	3850
H	3850	4300
J	4300	4800
K	4800	5400
L	5400	6000

Code	Min Flux (lm)	Max Flux (lm)
M	6000	6600
N	6600	7200
O	7200	7800
P	7800	8400
Q	8400	9000
R	9000	9600
S	9600	10000
T	10000	10600
U	10600	11200

UNCONTROLLED COPY

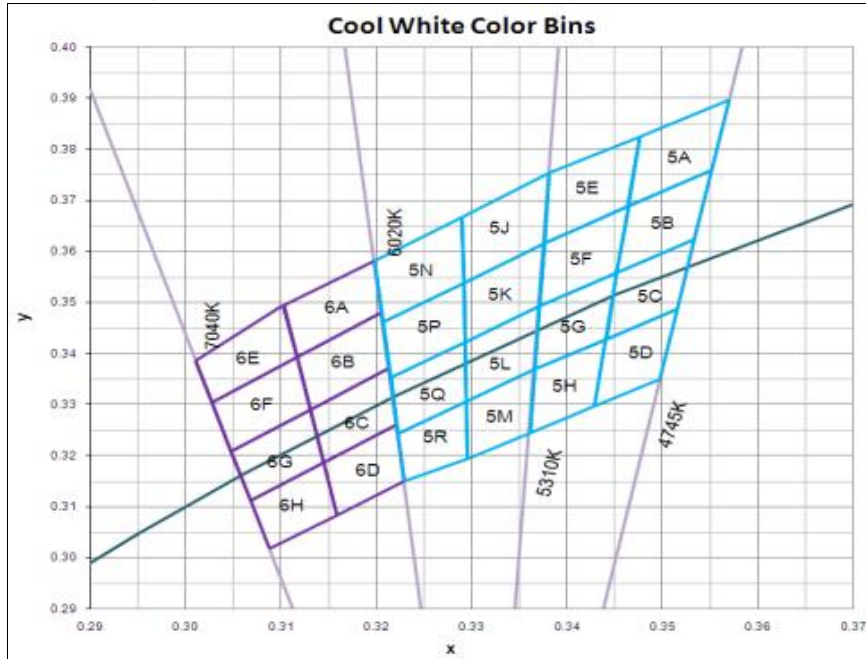
DSEM HOLDINGS SDN. BHD.

Address: Plot 26, Phase 4, Free Industrial Zone, Hilir Sungai Keluang 3, 11900 Bayan Lepas, Penang, Malaysia.
 Website: www.dsem.com Tel: +60 4 646 7311 Fax: +60 4 643 2311



Color Binning – Cool White

Note: Tolerance for chromaticity coordinates is ± 0.01 .



Bin	x	y	CCT (K)
6A	0.3103	0.3495	6500
	0.3198	0.3582	
	0.3205	0.3481	
	0.3117	0.3393	
6B	0.3131	0.3290	6500
	0.3213	0.3371	
	0.3205	0.3481	
	0.3117	0.3393	
6C	0.3145	0.3187	6500
	0.3221	0.3261	
	0.3213	0.3371	
	0.3131	0.3290	
6D	0.3145	0.3187	6500
	0.3221	0.3261	
	0.3229	0.3151	
	0.3159	0.3084	
6E	0.3010	0.3385	6500
	0.3103	0.3495	
	0.3117	0.3393	
	0.3028	0.3304	
6F	0.3048	0.3209	6500
	0.3131	0.3290	
	0.3117	0.3393	
	0.3028	0.3304	
6G	0.3068	0.3113	6500
	0.3145	0.3187	
	0.3131	0.3290	
	0.3048	0.3209	
6H	0.3068	0.3113	6500
	0.3145	0.3187	
	0.3159	0.3084	
	0.3088	0.3018	

Bin	x	y	CCT (K)
5J	0.3290	0.3668	5700
	0.3382	0.3754	
	0.3376	0.3616	
	0.3292	0.3539	
5K	0.3292	0.3539	5700
	0.3293	0.3423	
	0.3371	0.3493	
	0.3376	0.3616	
5L	0.3294	0.3306	5700
	0.3366	0.3369	
	0.3371	0.3493	
	0.3293	0.3423	
5M	0.3294	0.3306	5700
	0.3366	0.3369	
	0.3361	0.3246	
	0.3295	0.3194	
5N	0.3198	0.3582	5700
	0.3290	0.3668	
	0.3292	0.3539	
	0.3207	0.3462	
5P	0.3222	0.3243	5700
	0.3294	0.3306	
	0.3293	0.3423	
	0.3215	0.3353	
5Q	0.3215	0.3353	5700
	0.3293	0.3423	
	0.3292	0.3539	
	0.3207	0.3462	
5R	0.3222	0.3243	5700
	0.3294	0.3306	
	0.3295	0.3194	
	0.3229	0.3151	

Bin	x	y	CCT (K)
5A	0.3476	0.3825	5000
	0.3569	0.3897	
	0.3551	0.3760	
	0.3464	0.3688	
5B	0.3464	0.3688	5000
	0.3551	0.3760	
	0.3533	0.3624	
	0.3452	0.3558	
5C	0.3452	0.3558	5000
	0.3533	0.3624	
	0.3515	0.3487	
	0.3441	0.3428	
5D	0.3441	0.3428	5000
	0.3515	0.3487	
	0.3497	0.3351	
	0.3429	0.3298	
5E	0.3382	0.3754	5000
	0.3476	0.3825	
	0.3464	0.3688	
	0.3376	0.3616	
5F	0.3371	0.3493	5000
	0.3452	0.3558	
	0.3441	0.3428	
	0.3366	0.3369	
5G	0.3376	0.3616	5000
	0.3464	0.3688	
	0.3452	0.3558	
	0.3371	0.3493	
5H	0.3366	0.3369	5000
	0.3441	0.3428	
	0.3429	0.3298	
	0.3361	0.3246	

DSEM HOLDINGS SDN. BHD.

Address: Plot 26, Phase 4, Free Industrial Zone, Hilir Sungai Keluang 3, 11900 Bayan Lepas, Penang, Malaysia.

Website: www.dsem.com

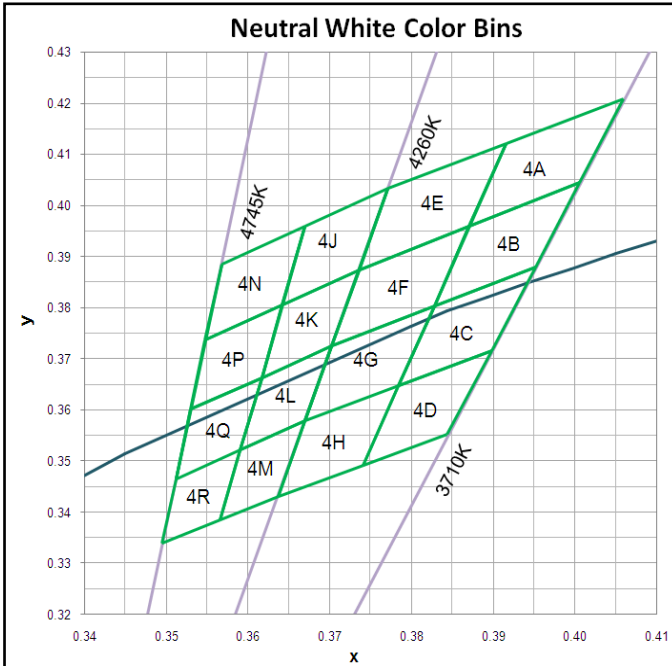
Tel: +60 4 646 7311

Fax: +60 4 643 2311



Color Binning – Neutral White

Note: Tolerance for chromaticity coordinates is ± 0.01 .



Bin	x	y	CCT (K)	Bin	x	y	CCT (K)
4J	0.3670	0.3959	4500	4A	0.3916	0.4121	4000
	0.3772	0.4033			0.4060	0.4208	
	0.3736	0.3874			0.4006	0.4044	
	0.3642	0.3805			0.3871	0.3959	
4K	0.3617	0.3663	4500	4B	0.3828	0.3803	4000
	0.3642	0.3805			0.3871	0.3959	
	0.3736	0.3874			0.4006	0.4044	
	0.3703	0.3726			0.3952	0.3880	
4L	0.3591	0.3522	4500	4C	0.3784	0.3647	4000
	0.3617	0.3663			0.3828	0.3803	
	0.3703	0.3726			0.3952	0.3880	
	0.3670	0.3578			0.3898	0.3716	
4M	0.3591	0.3522	4500	4D	0.3784	0.3647	4000
	0.3670	0.3578			0.3898	0.3716	
	0.3637	0.3430			0.3844	0.3552	
	0.3566	0.3385			0.3741	0.3491	
4N	0.3568	0.3885	4500	4E	0.3772	0.4033	4000
	0.3670	0.3959			0.3916	0.4121	
	0.3642	0.3805			0.3871	0.3959	
	0.3548	0.3736			0.3736	0.3874	
4P	0.3512	0.3465	4500	4F	0.3670	0.3578	4000
	0.3530	0.3601			0.3703	0.3726	
	0.3617	0.3663			0.3736	0.3874	
	0.3591	0.3522			0.3871	0.3959	
4Q	0.3530	0.3601	4500	4G	0.3703	0.3726	4000
	0.3548	0.3736			0.3736	0.3874	
	0.3642	0.3805			0.3871	0.3959	
	0.3617	0.3663			0.3828	0.3803	
4R	0.3512	0.3465	4500	4H	0.3670	0.3578	4000
	0.3591	0.3522			0.3784	0.3647	
	0.3566	0.3385			0.3741	0.3491	
	0.3496	0.3340			0.3637	0.3430	

DSEM HOLDINGS SDN. BHD.

Address: Plot 26, Phase 4, Free Industrial Zone, Hilir Sungai Keluang 3, 11900 Bayan Lepas, Penang, Malaysia.

Website: www.dsem.com

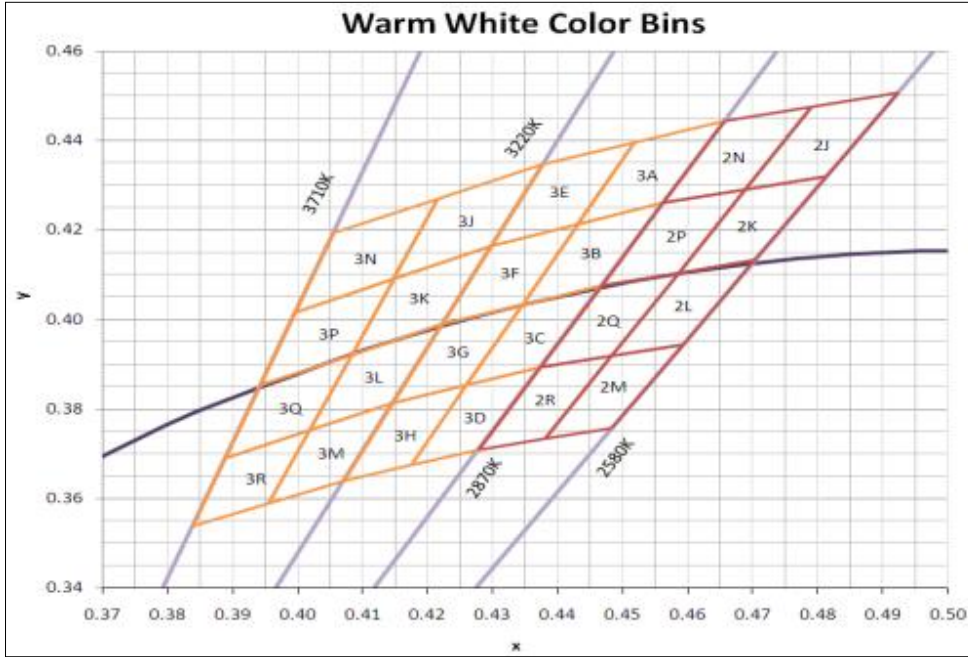
Tel: +60 4 646 7311

Fax: +60 4 643 2311



Color Binning – Warm White

Note: Tolerance for chromaticity coordinates is ±0.01.



Bin	x	y	CCT (K)
3J	0.4216	0.4270	3500
	0.4378	0.4346	
	0.4299	0.4165	
	0.4148	0.4090	
3K	0.4083	0.3921	3500
	0.4148	0.4090	
	0.4299	0.4165	
	0.4223	0.3990	
3L	0.4018	0.3752	3500
	0.4083	0.3921	
	0.4223	0.3990	
	0.4147	0.3814	
3M	0.4018	0.3752	3500
	0.4147	0.3814	
	0.4071	0.3639	
	0.3955	0.3589	
3N	0.4055	0.4194	3500
	0.4216	0.4270	
	0.4148	0.4090	
	0.3996	0.4015	
3P	0.3943	0.3853	3500
	0.3996	0.4015	
	0.4148	0.4090	
	0.4083	0.3921	
3Q	0.3889	0.3690	3500
	0.3943	0.3853	
	0.4083	0.3921	
	0.4018	0.3752	
3R	0.3889	0.3690	3500
	0.4018	0.3752	
	0.3955	0.3589	
	0.3840	0.3539	

Bin	x	y	CCT (K)
3A	0.4517	0.4395	3000
	0.4657	0.4444	
	0.4562	0.4260	
	0.4431	0.4213	
3B	0.4345	0.4033	3000
	0.4431	0.4213	
	0.4562	0.4260	
	0.4468	0.4077	
3C	0.4260	0.3854	3000
	0.4345	0.4033	
	0.4468	0.4077	
	0.4373	0.3893	
3D	0.4260	0.3854	3000
	0.4373	0.3893	
	0.4279	0.3710	
	0.4175	0.3674	
3E	0.4378	0.4346	3000
	0.4517	0.4395	
	0.4431	0.4213	
	0.4299	0.4165	
3F	0.4223	0.3990	3000
	0.4299	0.4165	
	0.4431	0.4213	
	0.4345	0.4033	
3G	0.4147	0.3814	3000
	0.4223	0.3990	
	0.4345	0.4033	
	0.4260	0.3854	
3H	0.4147	0.3814	3000
	0.4260	0.3854	
	0.4175	0.3674	
	0.4071	0.3639	

Bin	x	y	CCT (K)
2J	0.4790	0.4475	2700
	0.4923	0.4507	
	0.4813	0.4319	
	0.4688	0.4290	
2K	0.4586	0.4104	2700
	0.4688	0.4290	
	0.4813	0.4319	
	0.4703	0.4132	
2L	0.4483	0.3919	2700
	0.4586	0.4104	
	0.4703	0.4132	
	0.4593	0.3944	
2M	0.4483	0.3919	2700
	0.4593	0.3944	
	0.4483	0.3757	
	0.4381	0.3733	
2N	0.4657	0.4444	2700
	0.4790	0.4475	
	0.4688	0.4290	
	0.4562	0.4260	
2P	0.4468	0.4077	2700
	0.4562	0.4260	
	0.4688	0.4290	
	0.4586	0.4104	
2Q	0.4373	0.3893	2700
	0.4468	0.4077	
	0.4586	0.4104	
	0.4483	0.3919	
2R	0.4373	0.3893	2700
	0.4483	0.3919	
	0.4381	0.3733	
	0.4279	0.3710	

DSEM HOLDINGS SDN. BHD.

Address: Plot 26, Phase 4, Free Industrial Zone, Hilir Sungai Keluang 3, 11900 Bayan Lepas, Penang, Malaysia.

Website: www.dsem.com

Tel: +60 4 646 7311

Fax: +60 4 643 2311



Product Packaging and Labelling

All DSEM LEDs are 100% tested, binned and labeled. Products are labeled by printing information on the back side of the unit. The following format is used for labeling:

X X X X
A B C D – E F G H
M N O P Q – Y Y W W

- Where:
- X X X X – designates the bin code (G02K, etc.)
 - A B C D – E F G H – designates the base part number (DDHB-C105-X0XX, etc.)
 - M N O P Q – designates the production lot code (12345, etc.)
 - Y Y W W – designates the date code (production year and production week, 1020, etc.)

Individual units are packaged in tubes for shipment. All products packaged within a single tube are of the same flux and color bin combination (or bin code). An example of the tube label and is included below:



Tube label

- Where:
- X X X X – designates the bin code (G02K, etc.)
 - A B C D – E F G H – designates the base part number (DDHB-C105-X0XX, etc.)
 - M N O P Q – designates the production lot code (12345, etc.)
 - Y Y W W – designates the date code (production year and production week, 1020, etc.)
 - Z Z – designates the quantity

Tubes are packaged in bags prior to loading into boxes for shipment. One tube is loaded per bag. All products packaged within a single bag are of the same flux and color bin combination (or bin code). Each bag is labeled with the information required for effective inventory management. An example of the bag label is included below.



Bag Label

- Where:
- X X X X – designates the bin code (G02K, etc.)
 - A B C D – E F G H – designates the base part number (DDHB-C105-X0XX, etc.)
 - M N O P Q – designates the production lot code (12345, etc.)
 - Y Y W W – designates the date code (production year and production week, 1020, etc.)
 - Z Z Z – designates the unit quantity in one bag

DSEM HOLDINGS SDN. BHD.

Address: Plot 26, Phase 4, Free Industrial Zone, Hilir Sungai Keluang 3, 11900 Bayan Lepas, Penang, Malaysia.

Website: www.dsem.com

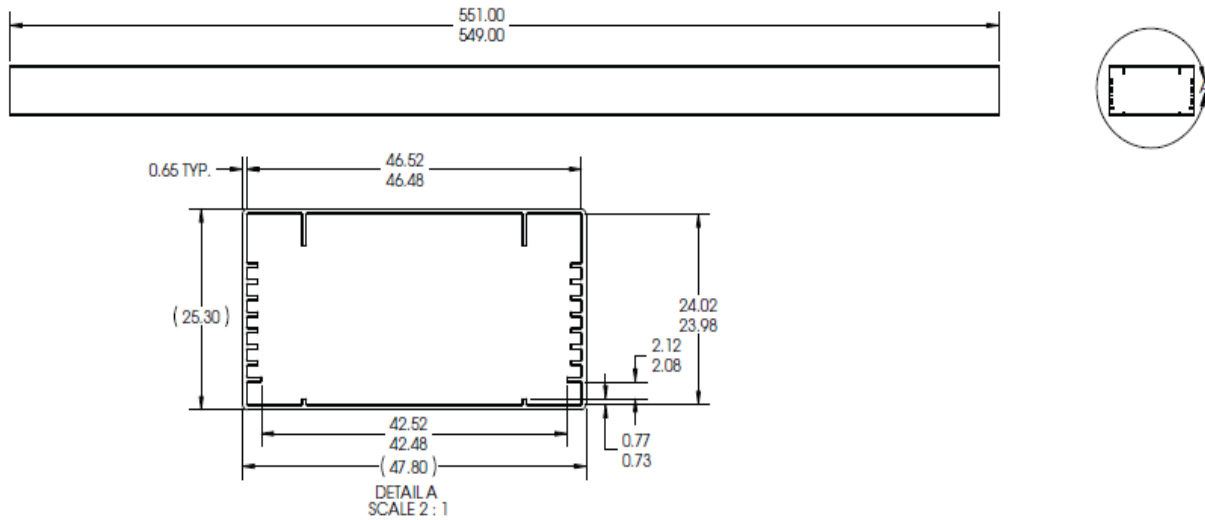
Tel: +60 4 646 7311

Fax: +60 4 643 2311



Packaging Tube Design

Figure 7:



Note:

- 1. Drawings are not to scale.
- 2. Drawing dimensions are in millimeters.

Cautionary Statements

CAUTION: CONTACT WITH OPTICAL AREA

Contact with the Silicone area should be avoided. Applying stress to the Silicone area can result in damage to the product.

CAUTION: EYE SAFETY

Eye safety classification for the use of DSEM LED is contained in the CIE S 009/E2002 Photobiological Safety of Lamps and Lamp Systems specification. DSEM LEDs are classified under section 6 lamp classifications as Risk Group 2 (Moderate Risk). Please use appropriate precautions. It is important that employees working with LEDs are trained to use them safely. Luminaries manufacturers should refer to CIE S 009/E2002 to establish the classification of their product.

CAUTION: RISK OF BURN

Do not touch the LED or Silicone area during operation. Allow the LED to cool for a sufficient period of time before handling. The LED may reach elevated temperatures such that it can burn skin when touched.

DSEM HOLDINGS SDN. BHD.

Address: Plot 26, Phase 4, Free Industrial Zone, Hilir Sungai Keluang 3, 11900 Bayan Lepas, Penang, Malaysia.

Website: www.dsem.com

Tel: +60 4 646 7311

Fax: +60 4 643 2311